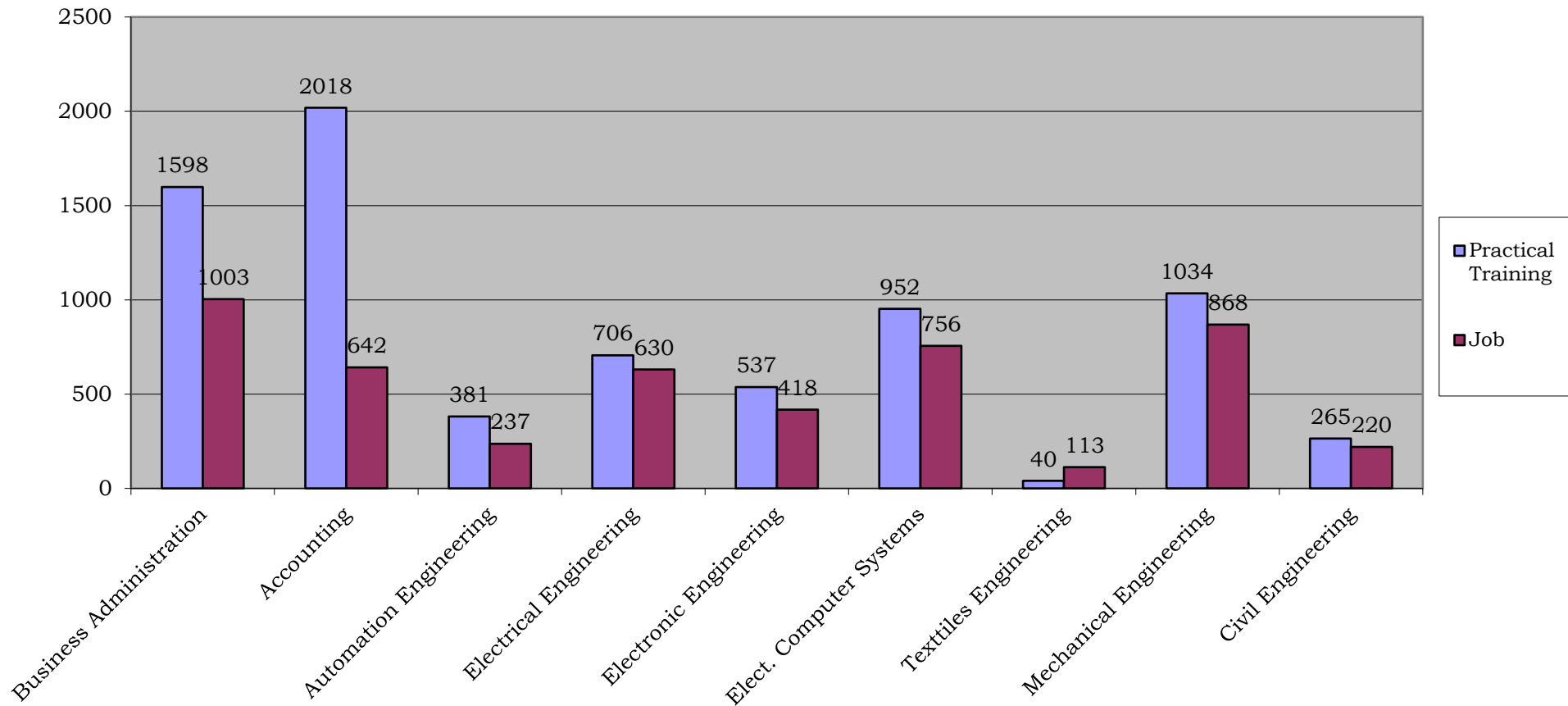
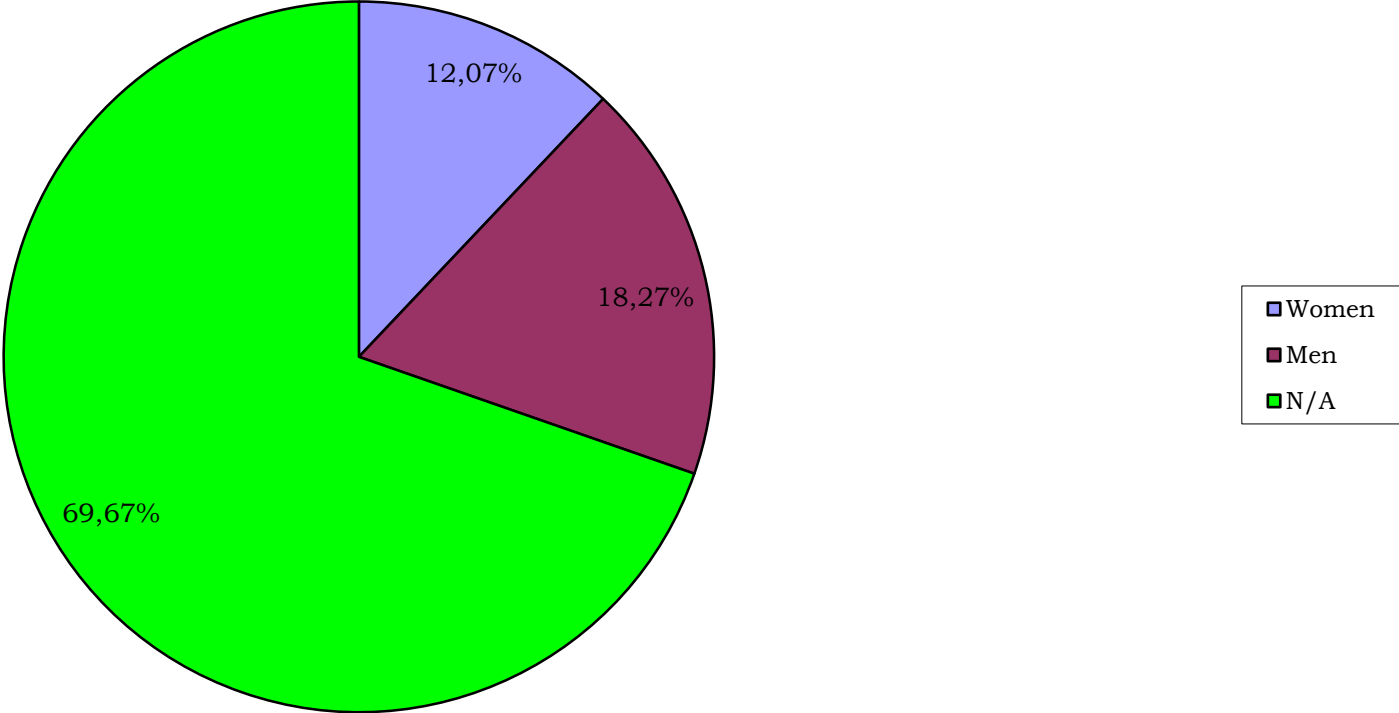


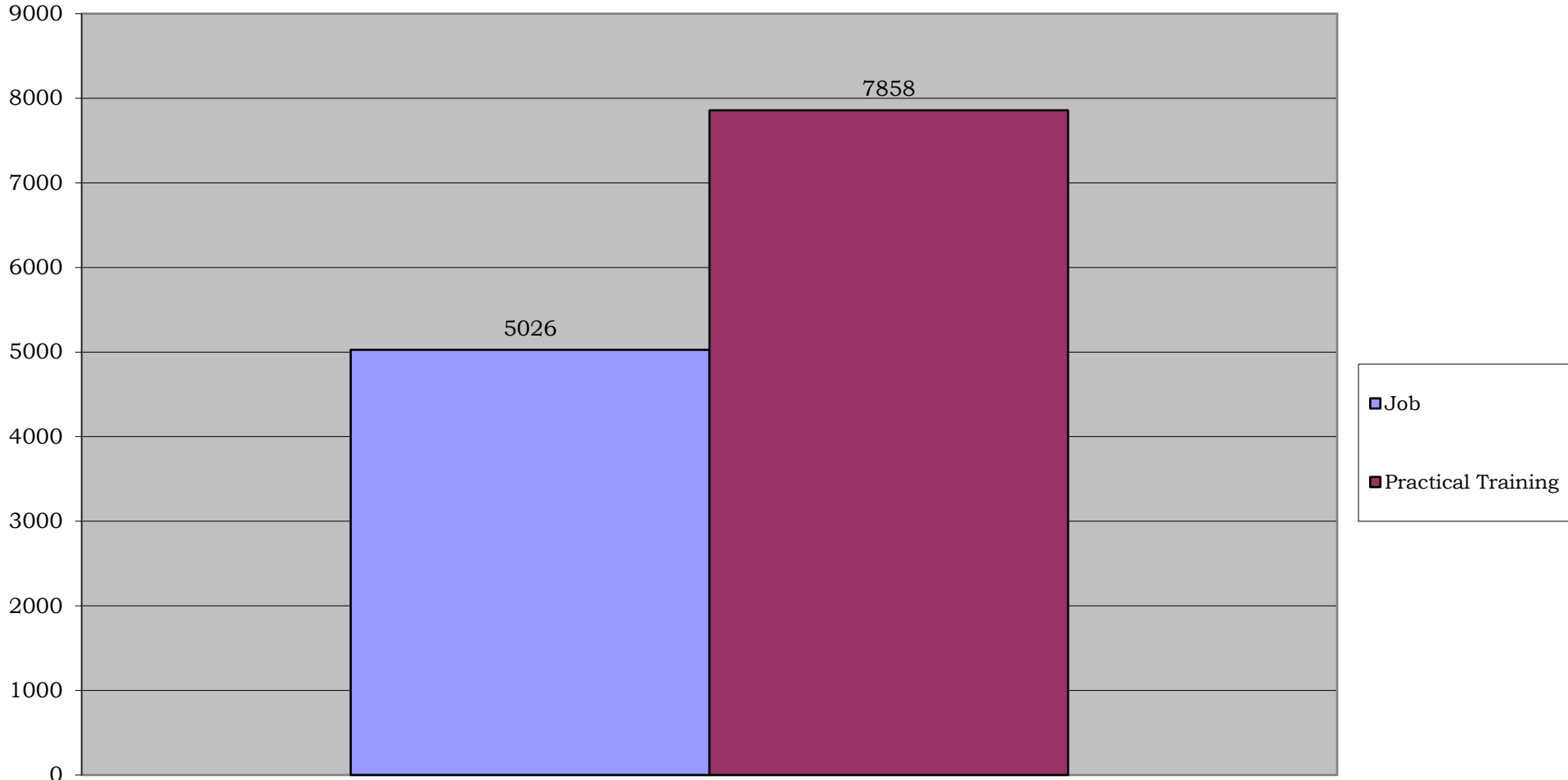
Distribution of business applications based on the specificity and the employment relationship from 01/01/1994 to 31/12/2015



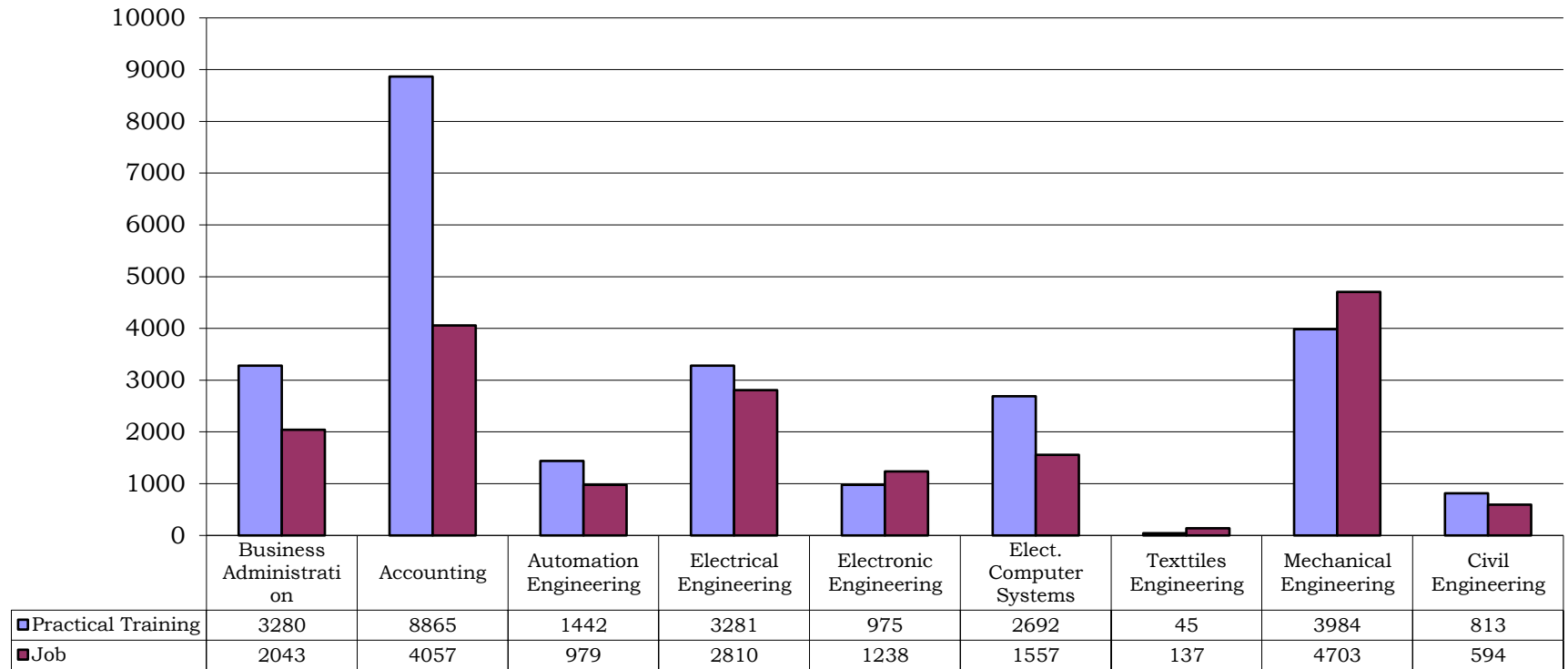
Distribution of business applications based on gender requested from 01/01/1994 to 31/12/2015



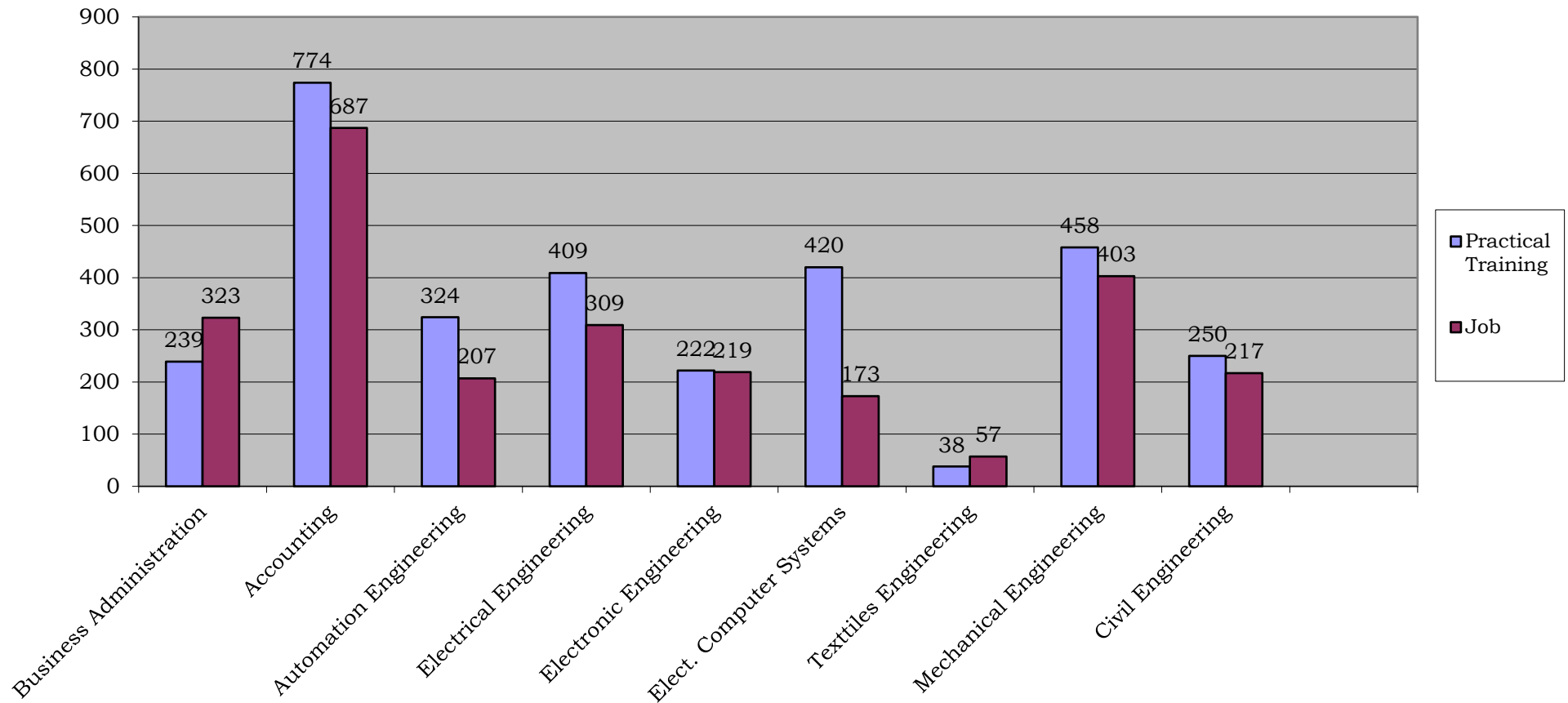
Distribution of business applications based on the employment relationship from 01/01/1994 to 31/12/2015



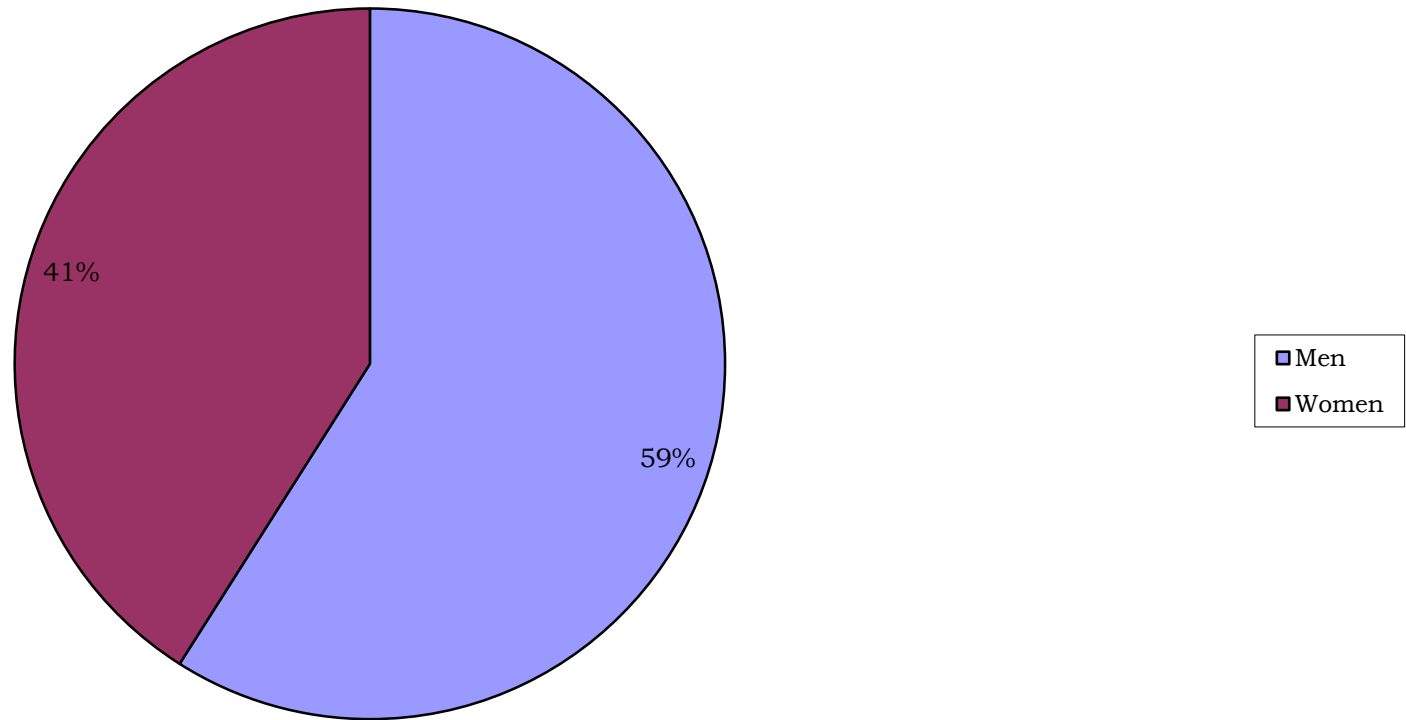
CVs of graduates - students sent to businesses for the period 01/09/2001 to 31/12/2015



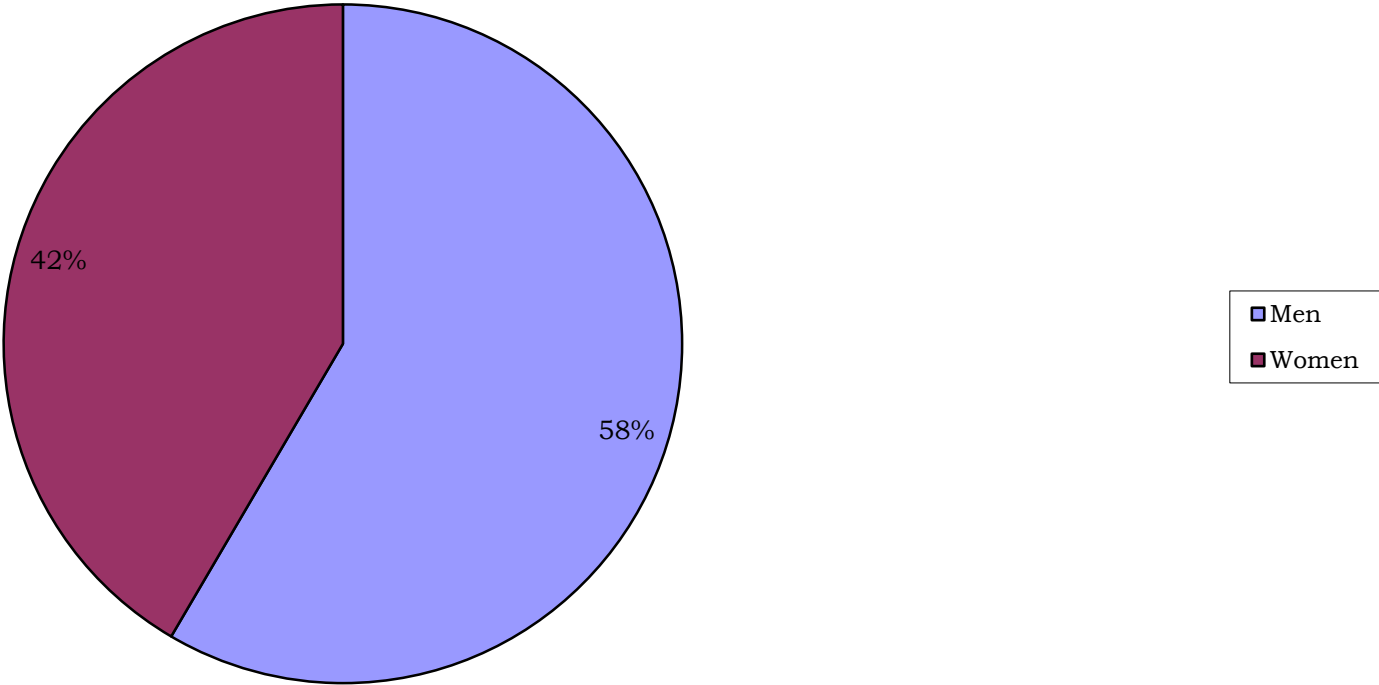
Distribution of graduates - students applications based on their section from 01/09/2001 up to 31/12/2015



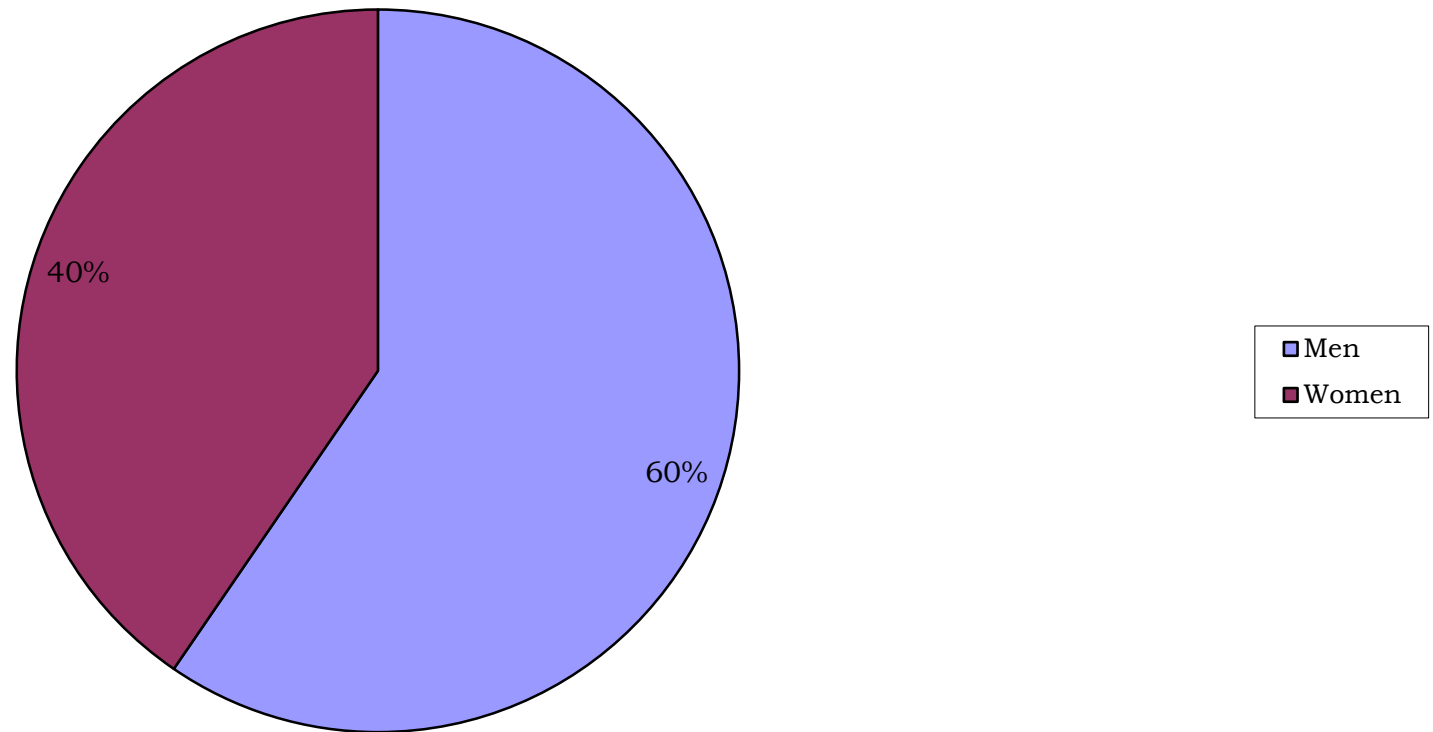
Distribution of graduates - students applications based on gender from 01/09/2001 to 31/12/2015



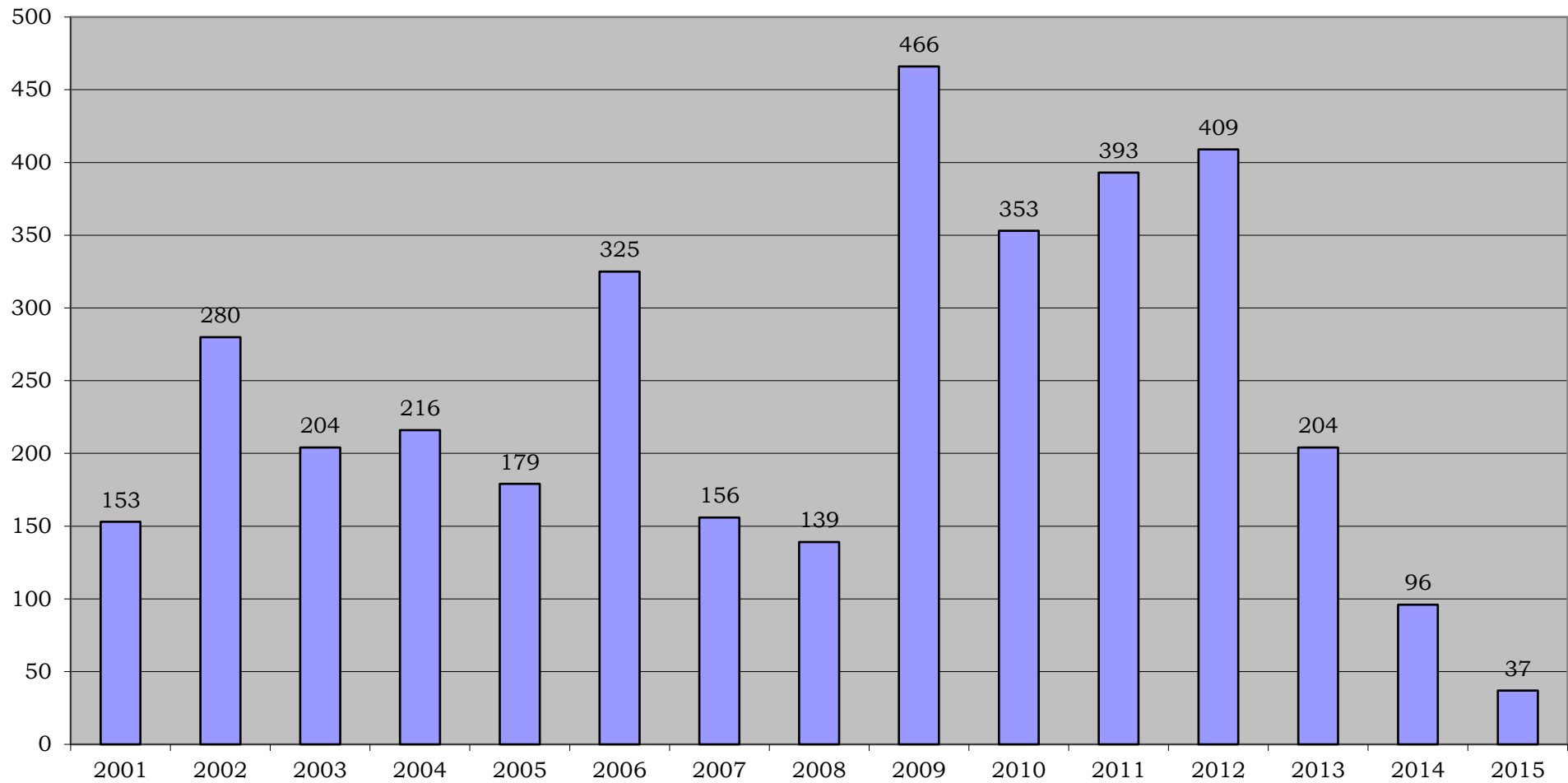
Distribution of graduates - students who used the counseling service based on gender from 01/09/2001 to 31/12/2015



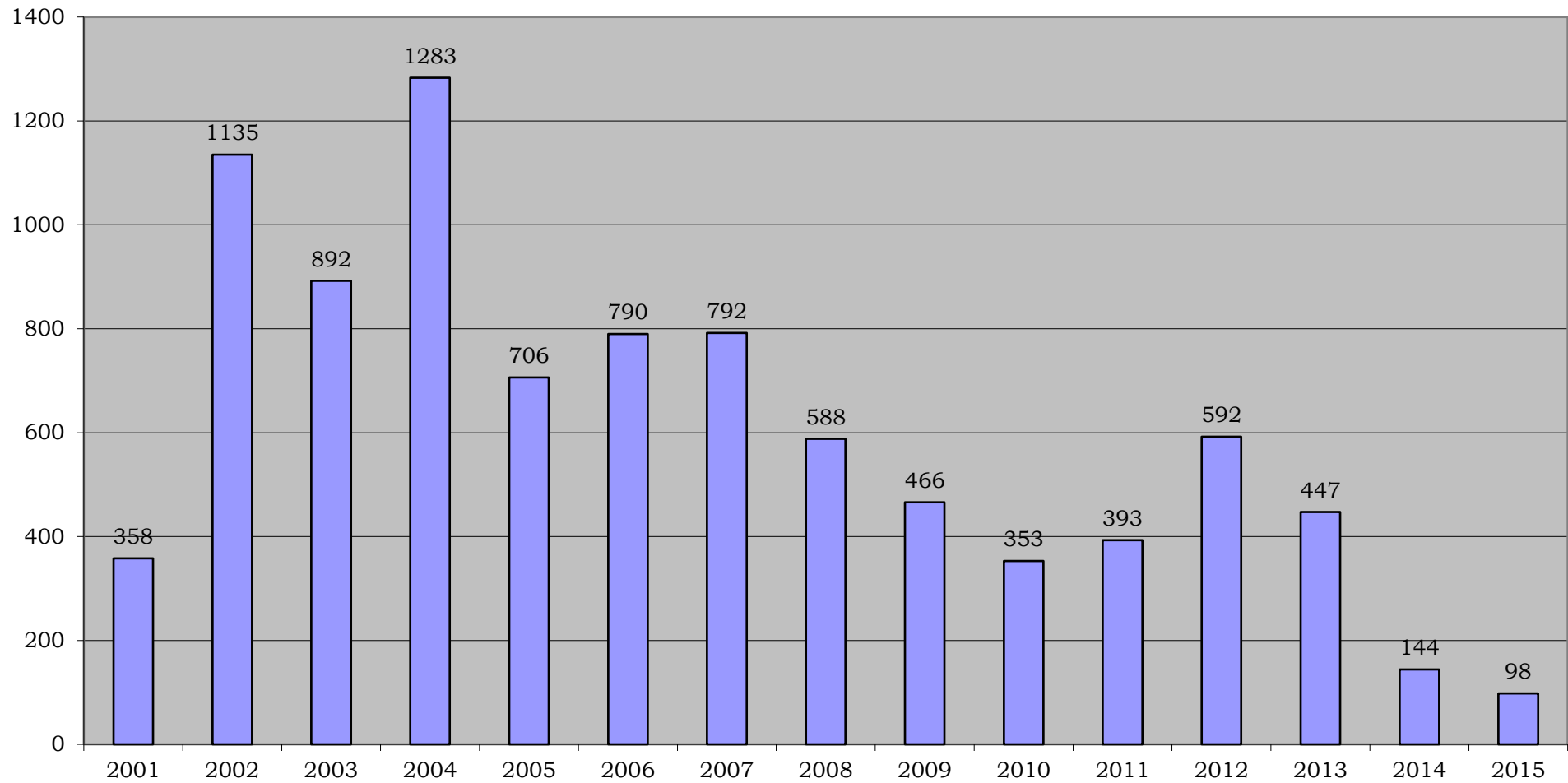
Distribution of graduates - students who used the Education Counselling Service based on gender from 01/09/2001 to 31/12/2015



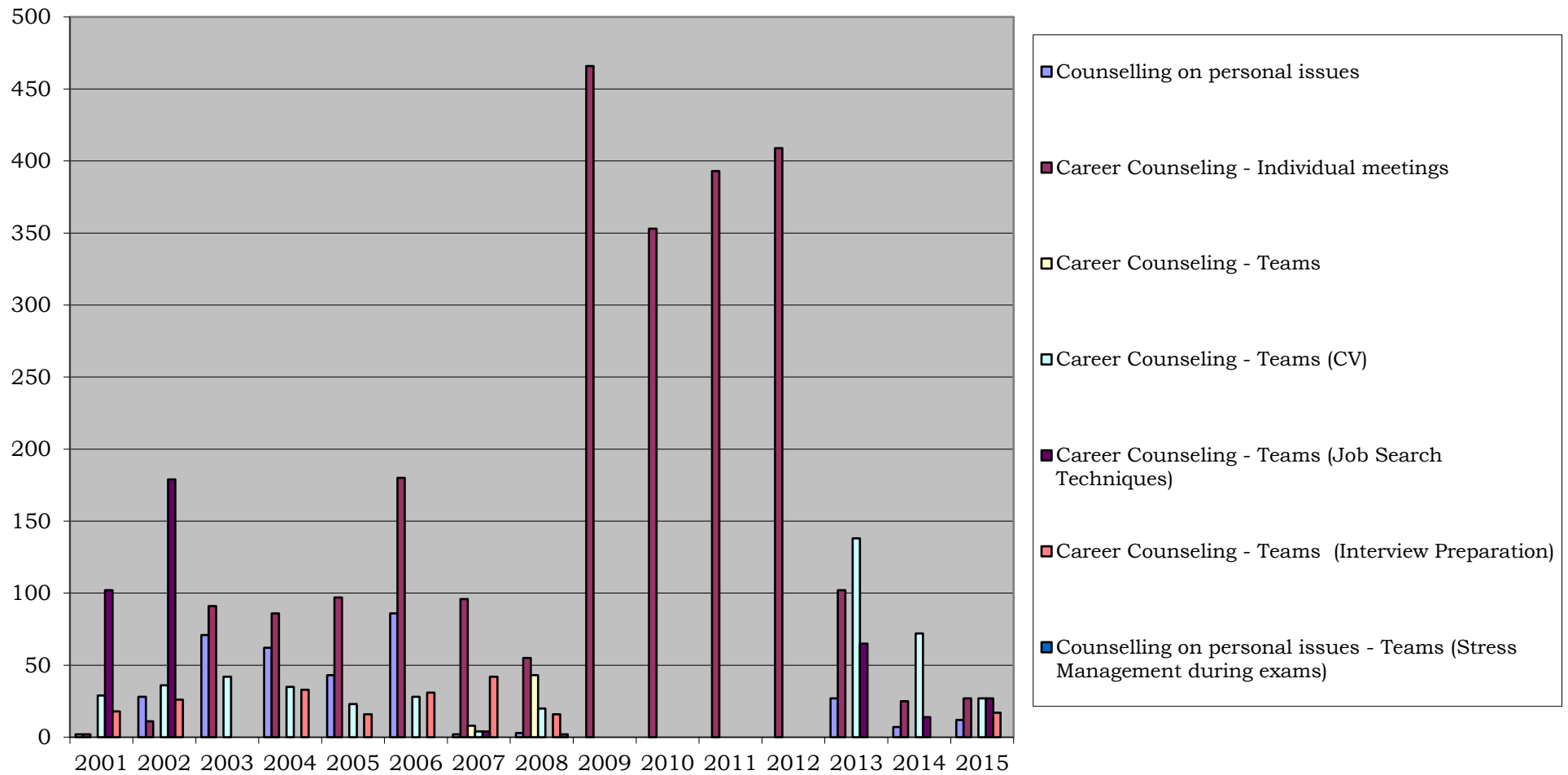
Graduates - students visits Counselling Service from 01/09/2001 to 31/12/2015



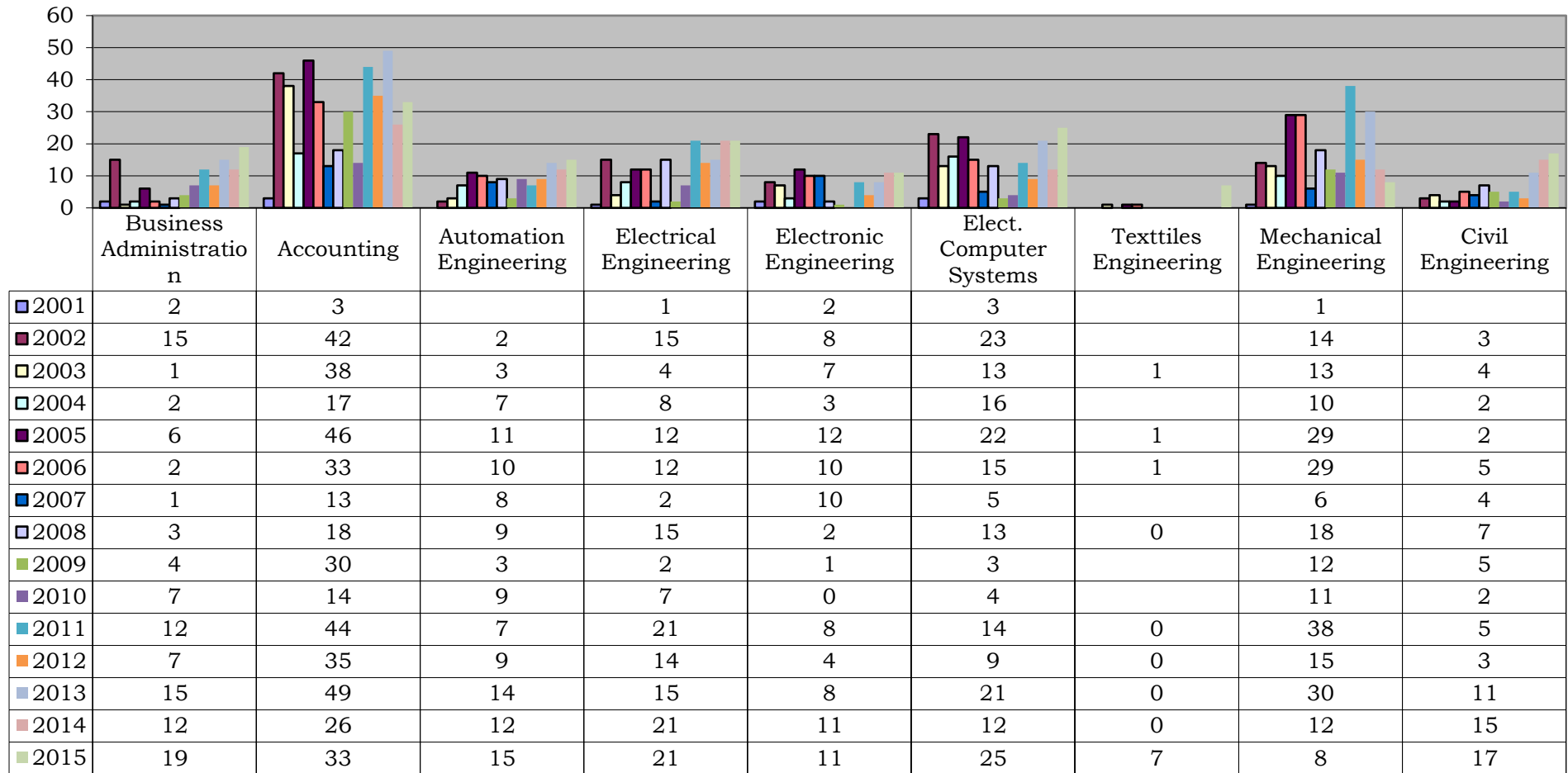
Graduates - students visits the Education Counselling Service from 01/09/2001 to 31/12/2015



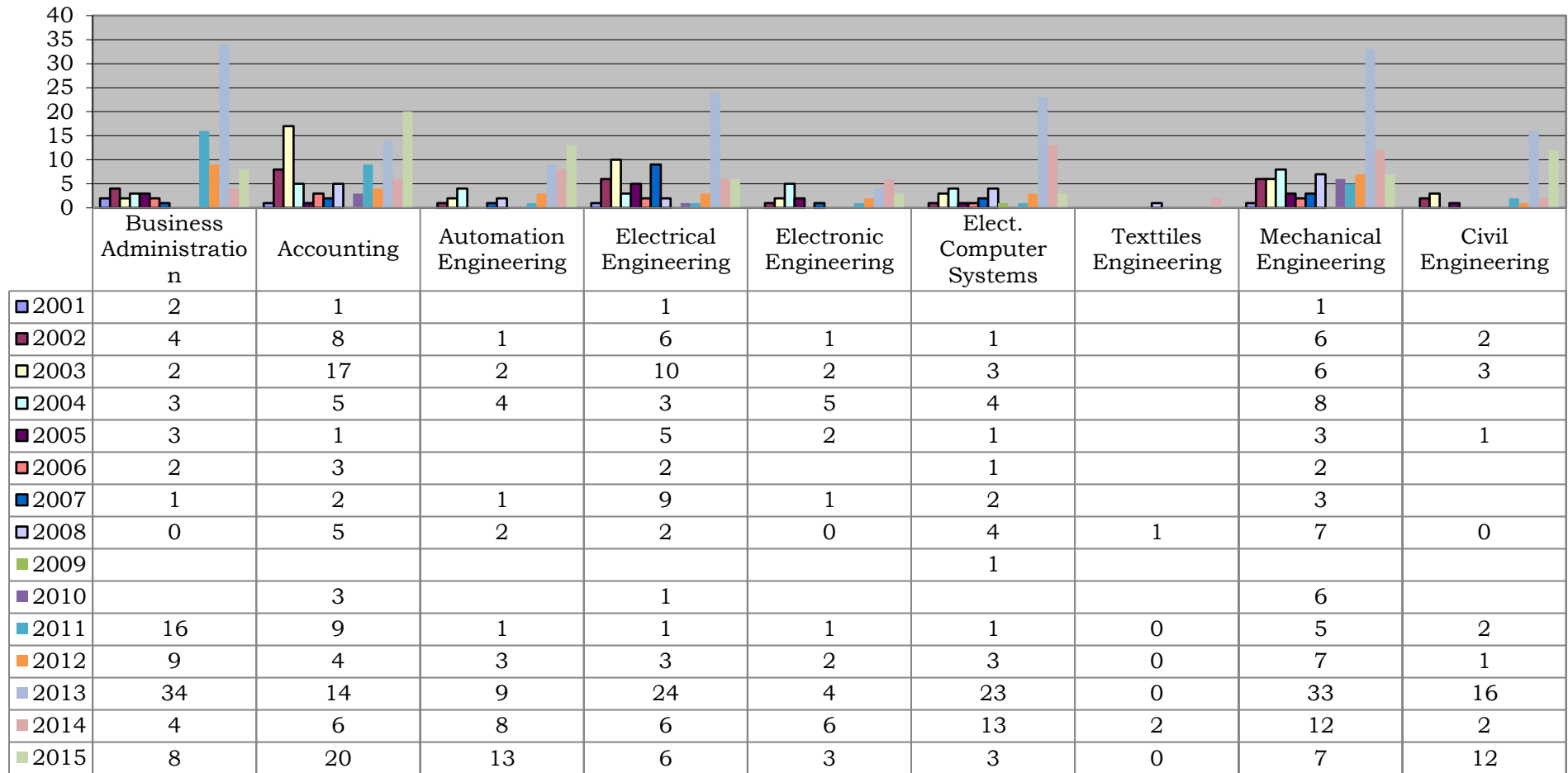
Distribution of graduates - students who used the Education Counselling Service based on cause
from 01/09/2001 to 31/12/2015



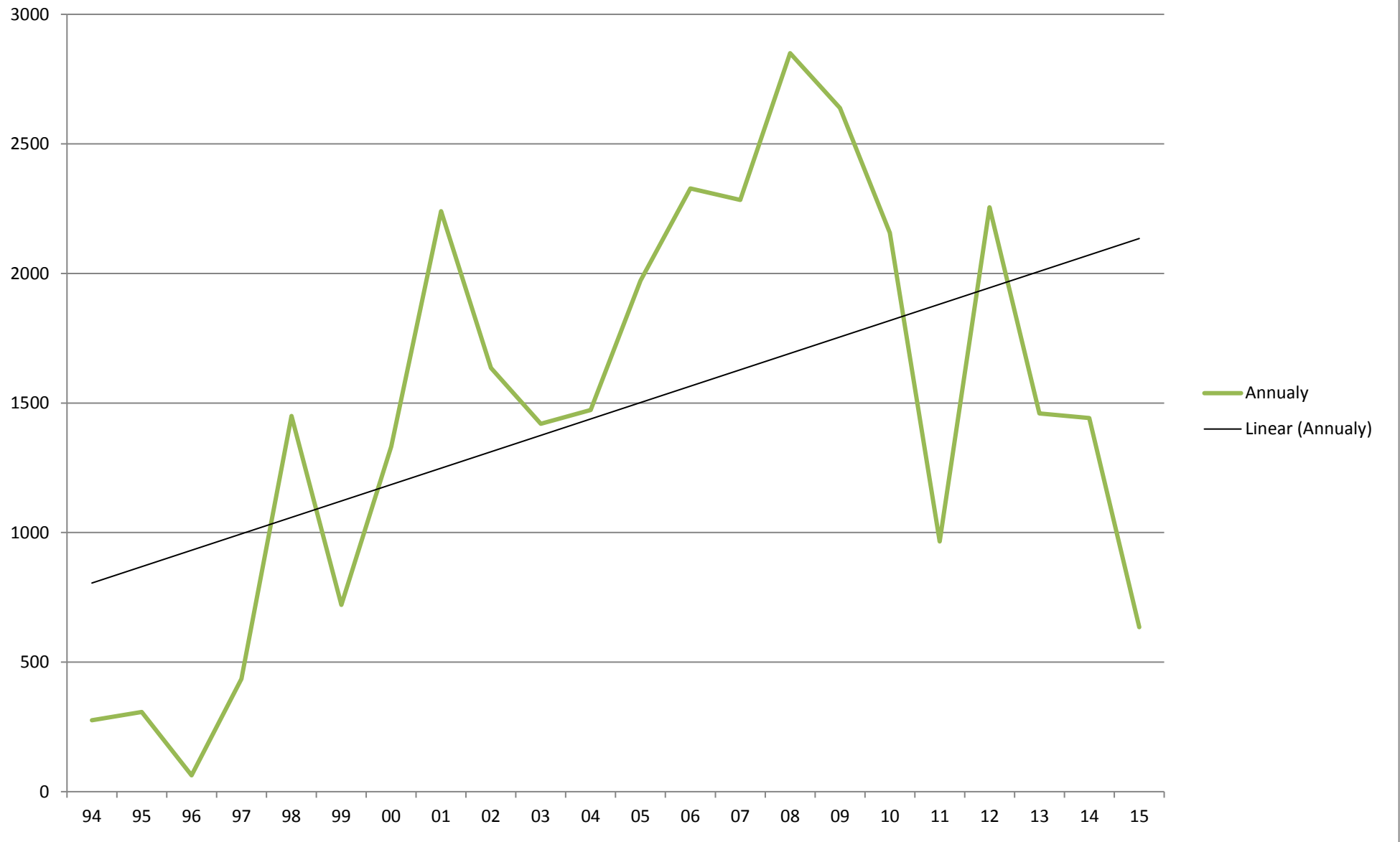
Practical training placements Recruitment through Liaison Office from 01-09-2000 to 31-12-2015



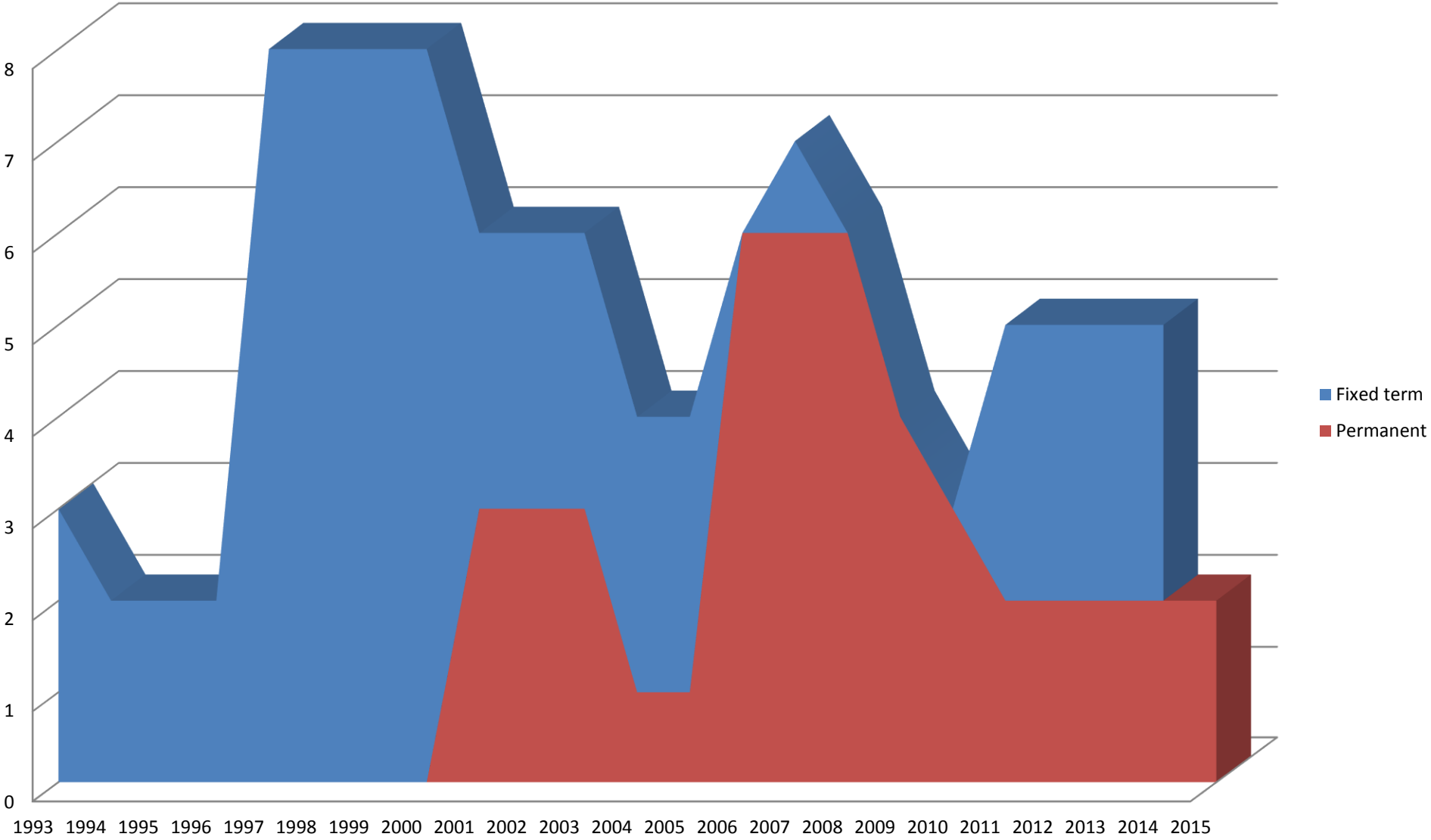
Work placements Recruitment through Liaison Office from 1-09-2001 to 31-12-2015



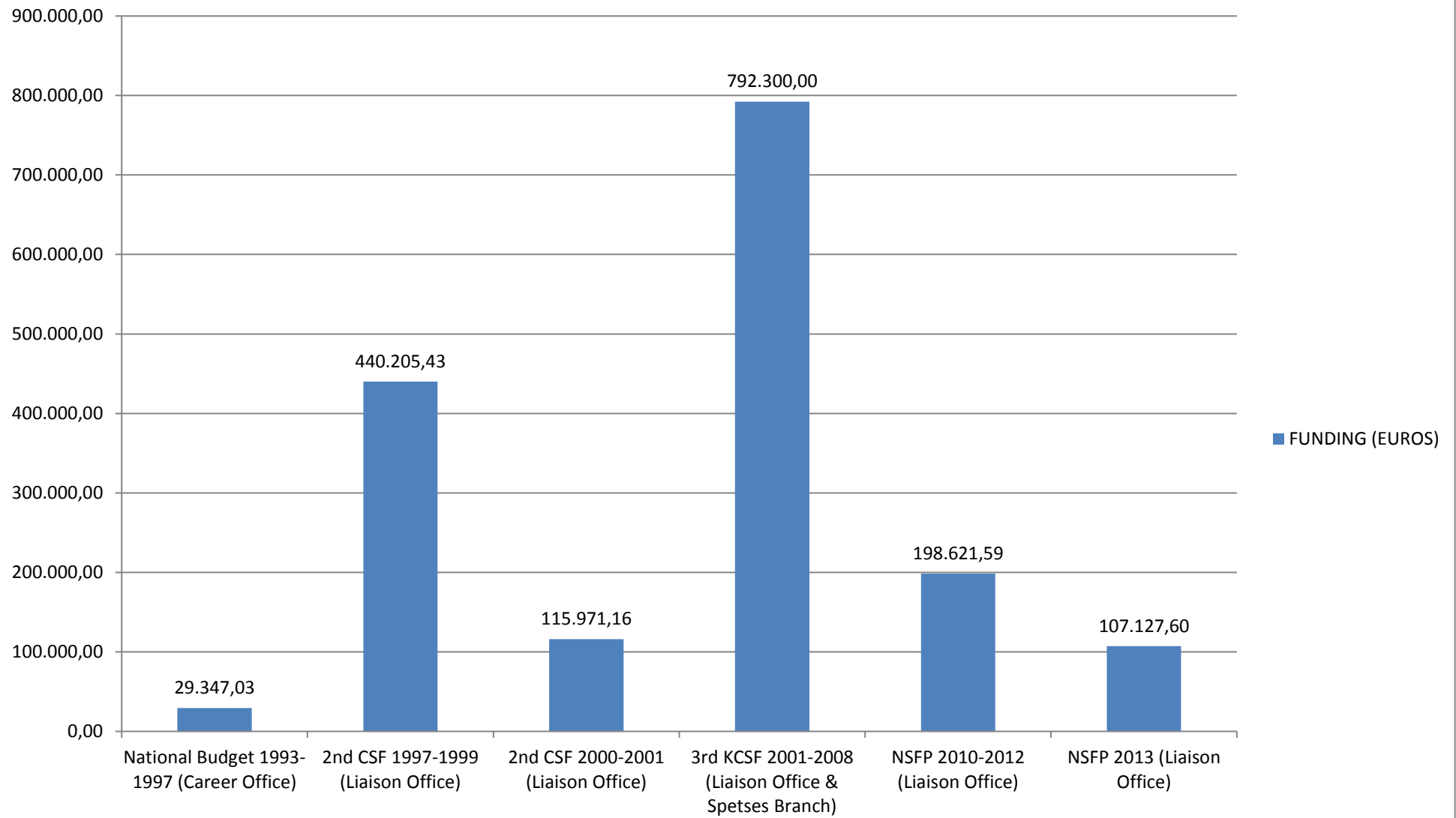
Number of documents handled by Liaison Office.



Staff



FUNDING (EUROS)



Social Media Statistics

